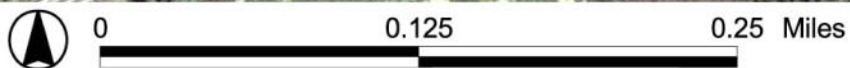
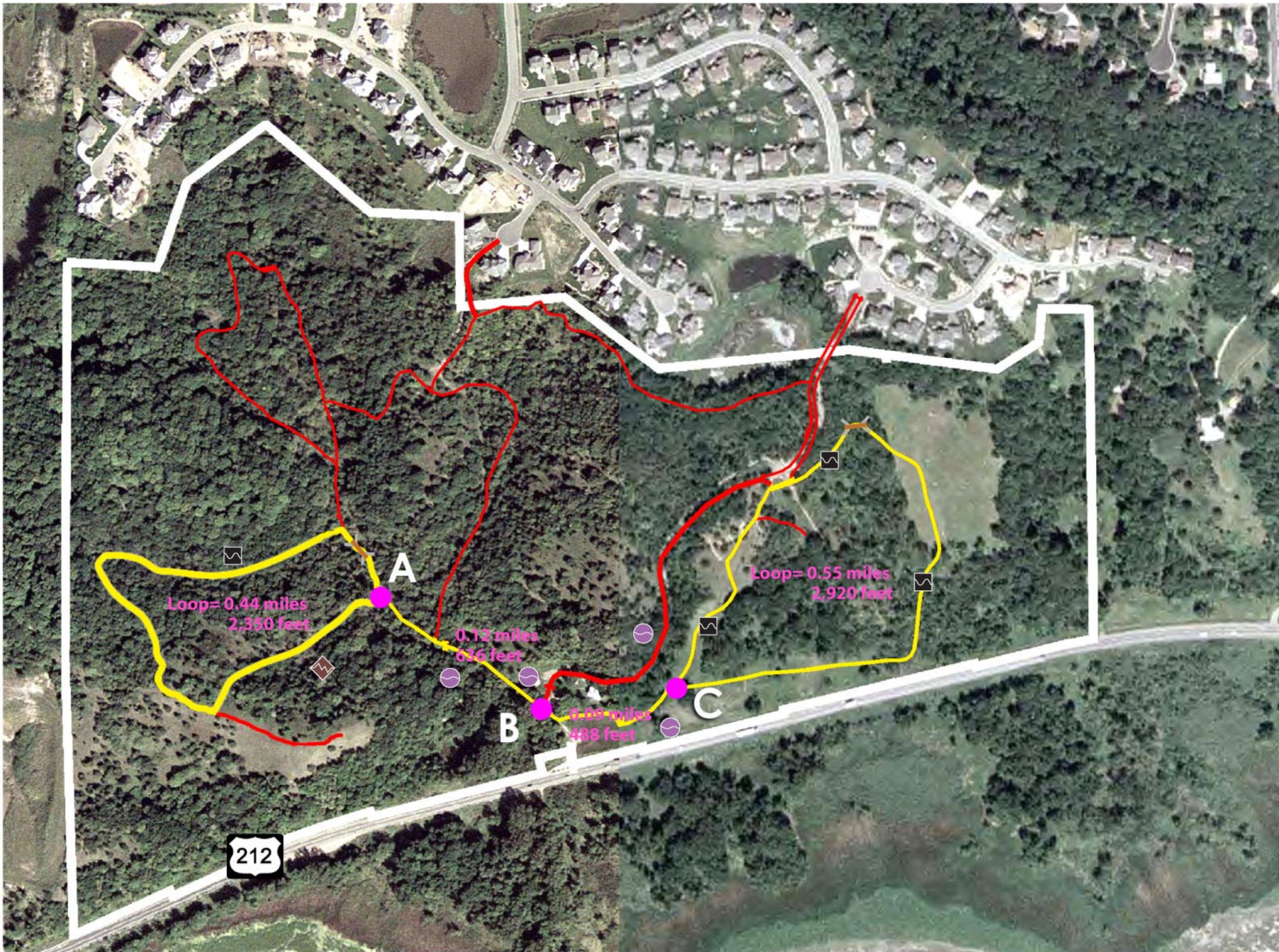


Elizabeth Fries Ellet Interpretive Trail



at the Richard T. Anderson Conservation Area





www.efeinterpretivetrail.com



Elizabeth Fries Ellet Interpretive Trail Distances

LEGEND

-  EFE Interpretive Trail
-  Other maintained trails

TRAIL	DISTANCE	DIFFICULTY
A-A loop	0.44 miles 2,350 feet	most difficult 
A-B	0.12 miles 636 feet	easy 
B-C	0.09 miles 488 feet	easy 
C-C loop	0.55 miles 2,920 feet	more difficult 

Bridge 